

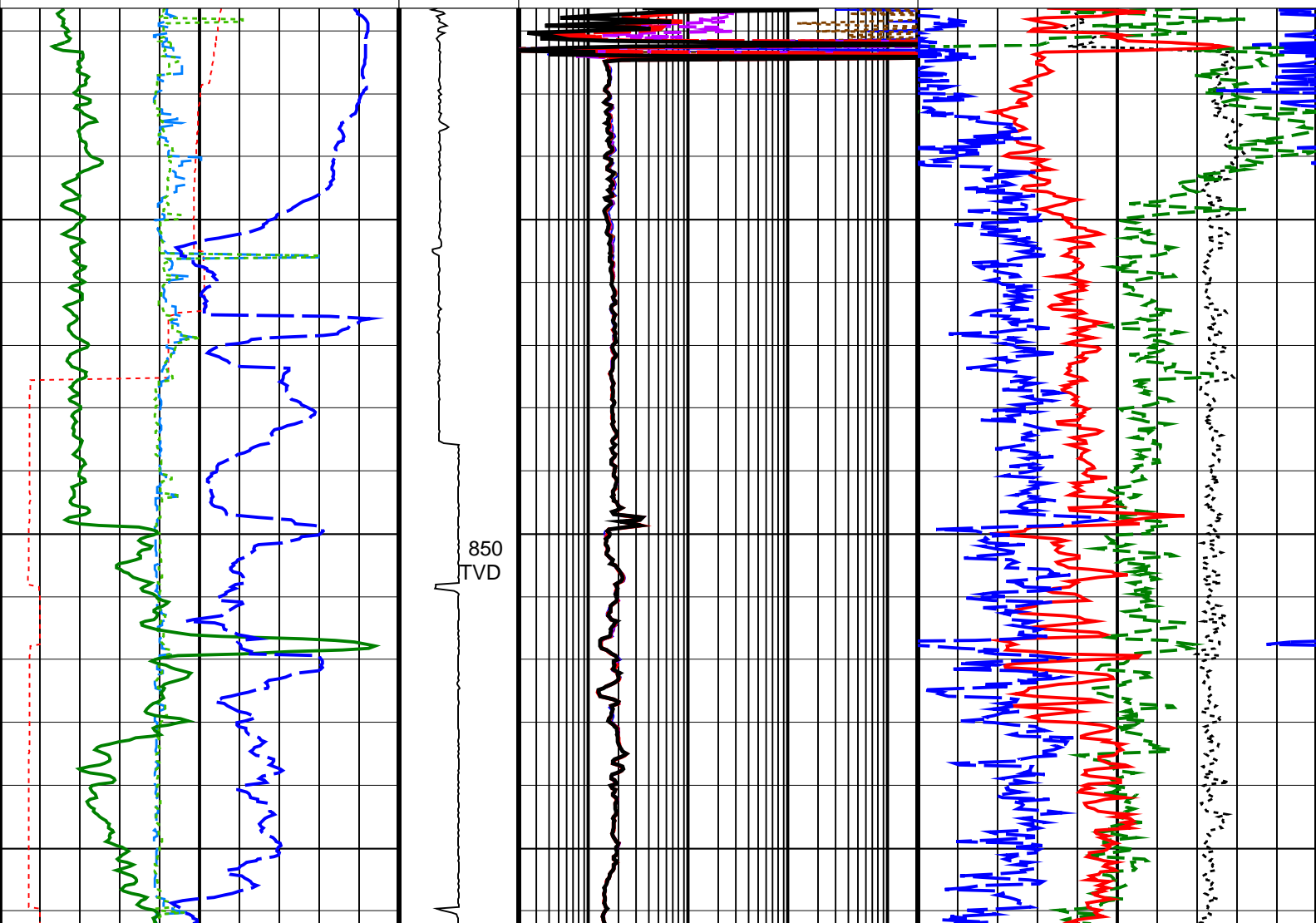
# True Vertical Depth Log

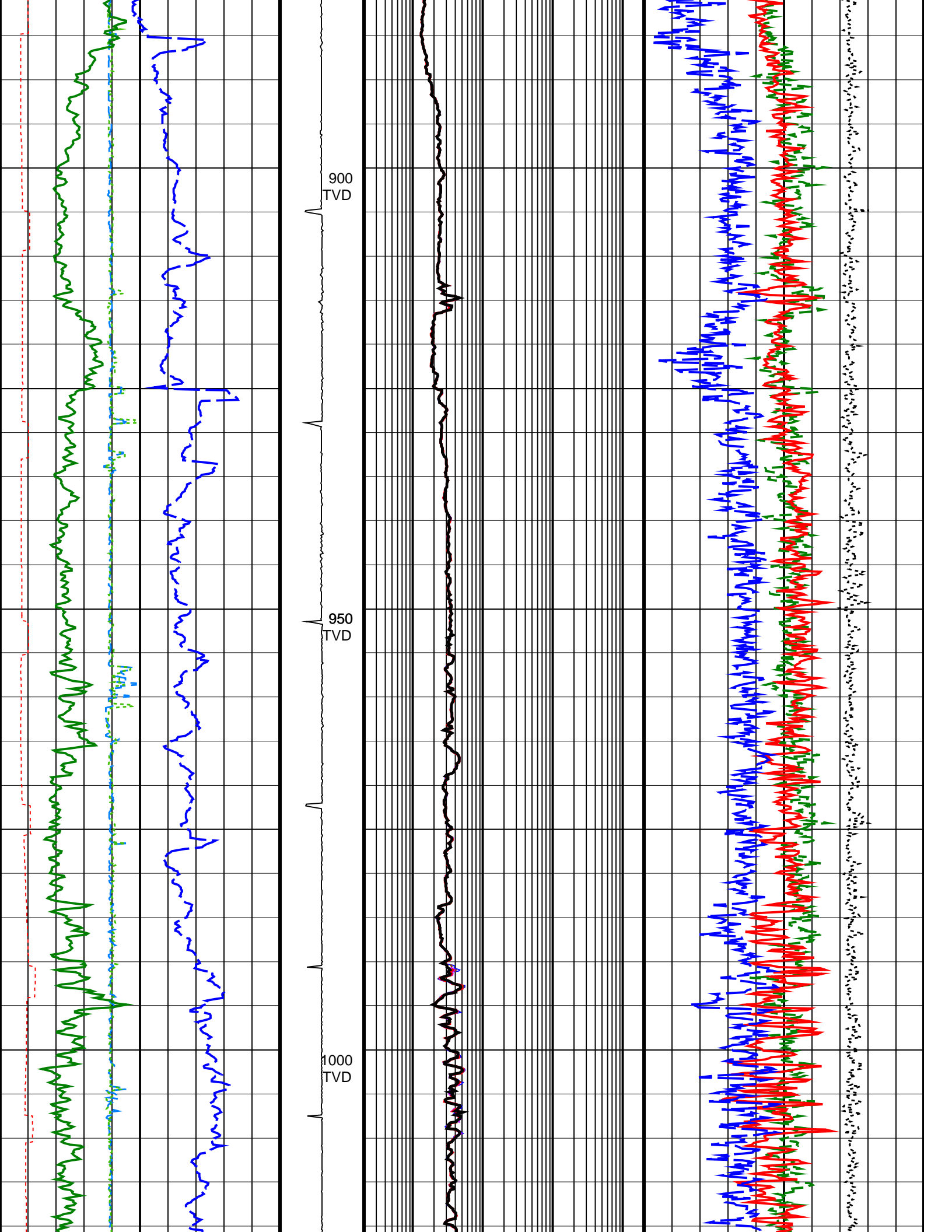
## WKF W8A LWD VISION SERVICE 500TVD

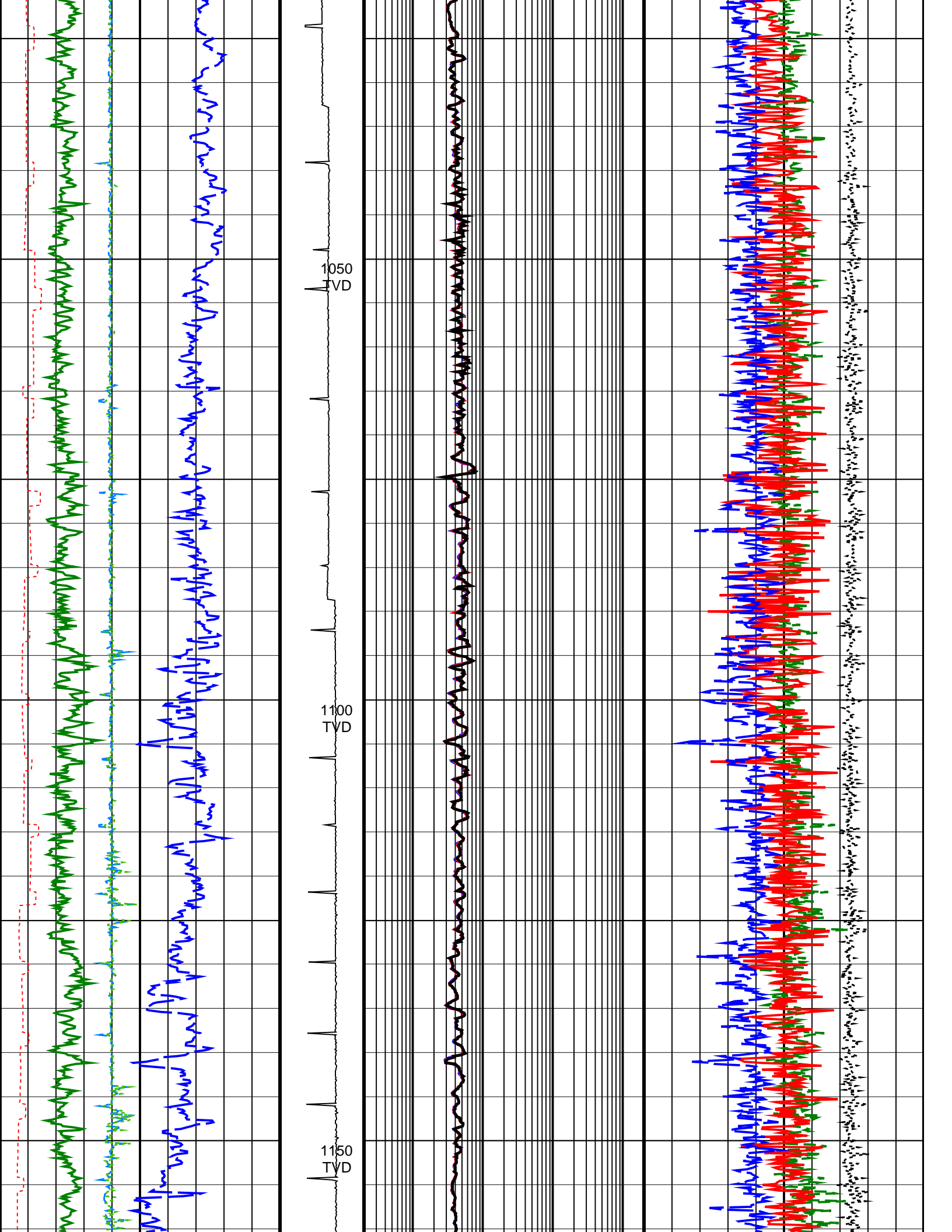
ARC6A-AA SON675	Id14_0c_26 Id14_0c_26	MWD_10 ADN	Id14_0c_26 Id14_0c_26
--------------------	--------------------------	---------------	--------------------------

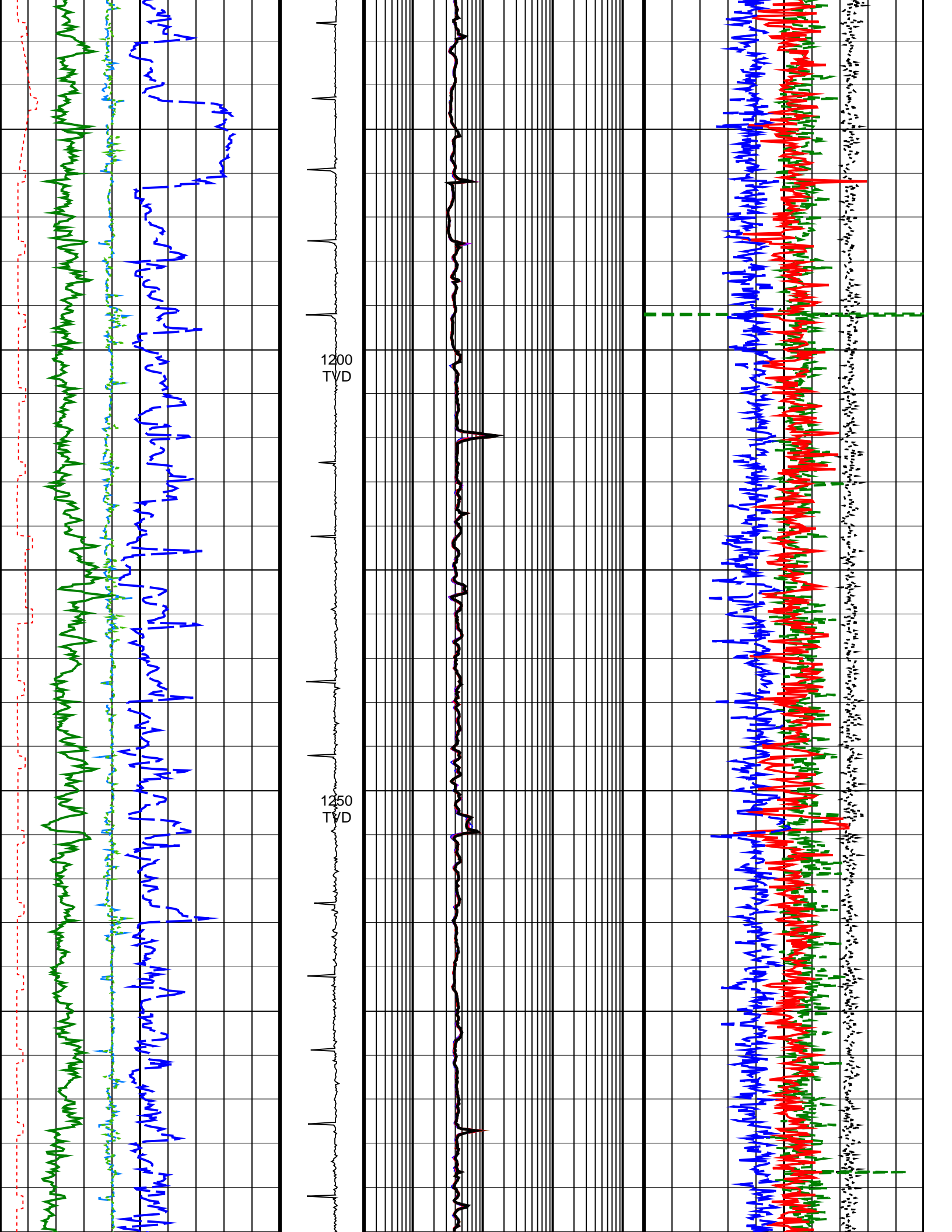
Format: VISION Service RM Log    Vertical Scale: 1:500    Graphics File Created: 09-Dec-2009 23:05

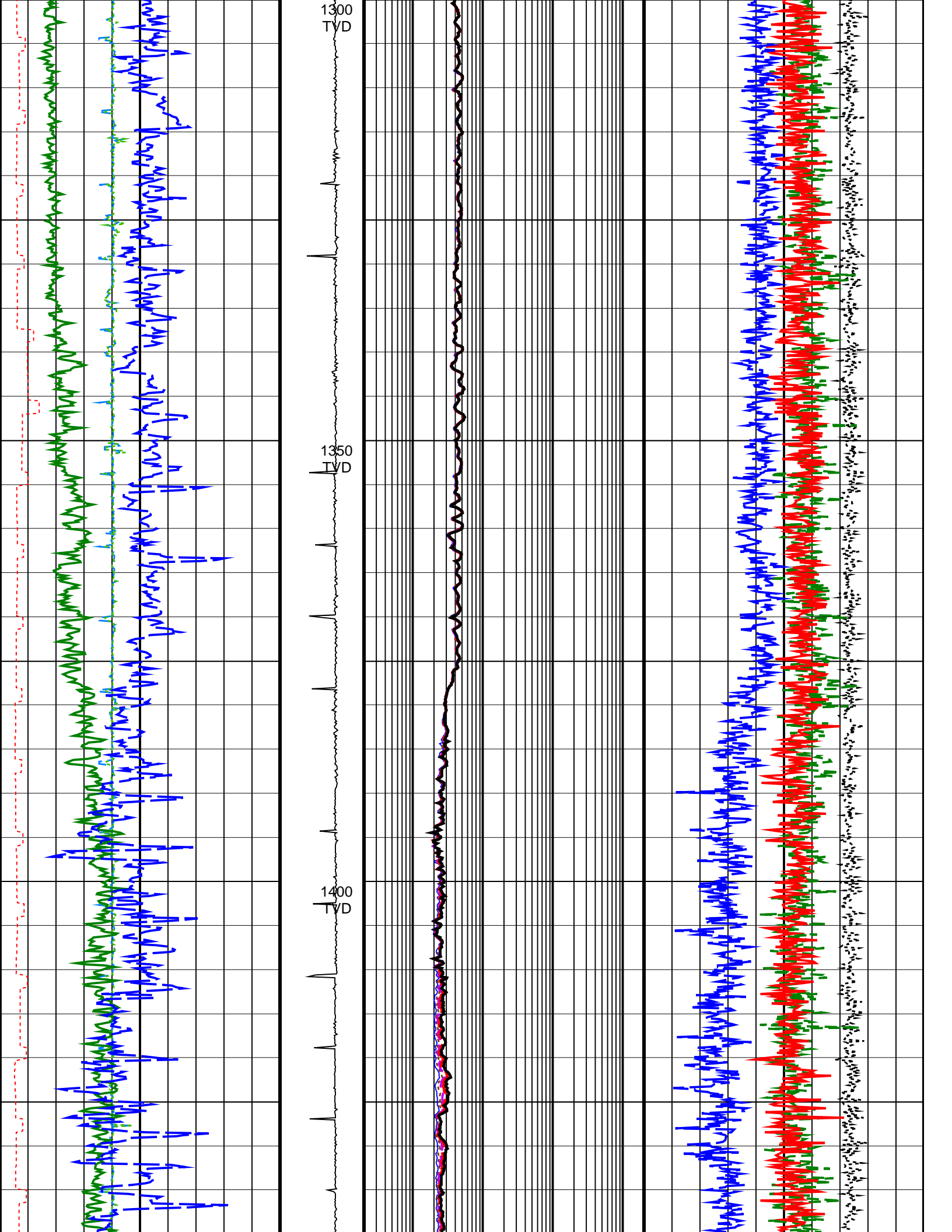
<p><b>Rate of Penetration, Averaged over Last 5ft (ROP5_RM)</b> 200 (M/HR) 0</p>	<p><b>ARC Phase-Shift Resistivity 40-in. at 2 MHz (P40H)</b> 0.2 (OHMM) 2000</p>	
<p><b>ARC Gamma Ray (GR_ARC)</b> 0 (GAPI) 200</p>	<p><b>ARC Phase-Shift Resistivity 34-in. at 2 MHz (P34H)</b> 0.2 (OHMM) 2000</p>	<p><b>Thermal Neutron Porosity (TNPH)</b> 0.45 (V/V) -0.15</p>
<p><b>Vertical Hole Diameter (VERD)</b> 6 (IN) 16</p>	<p><b>ARC Phase-Shift Resistivity 28-in. at 2 MHz (P28H)</b> 0.2 (OHMM) 2000</p>	<p><b>Bulk Density, Bottom (ROBB)</b> 1.85 (G/C3) 2.85</p>
<p><b>Horizontal Hole Diameter (HORD)</b> 6 (IN) 16</p>	<p><b>ARC Phase-Shift Resistivity 22-in. at 2 MHz (P22H)</b> 0.2 (OHMM) 2000</p>	<p><b>Photoelectric Factor, Bottom (PEB)</b> 0 (----) 10</p>
<p><b>Density Time After Bit (TAB_DEN)</b> 0 (HR) 10</p>	<p><b>ADN Rotational Speed (RPM_ADN) (RPM)</b> 0 250</p>	<p><b>ARC Phase-Shift Resistivity 16-in. at 2 MHz (P16H)</b> 0.2 (OHMM) 2000</p> <p><b>Bulk Density Correction, Bottom (DRHB)</b> -0.75 (G/C3) 0.25</p>

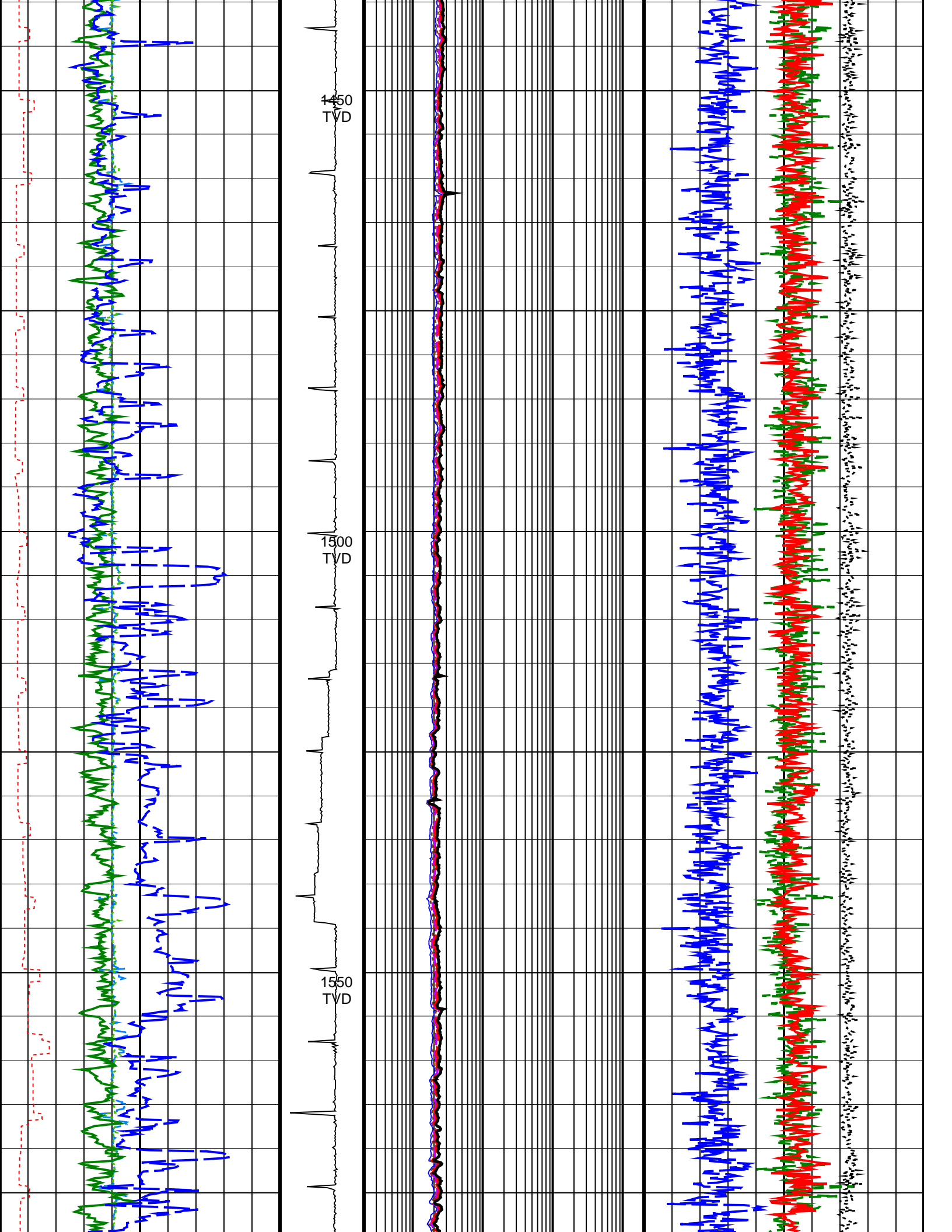


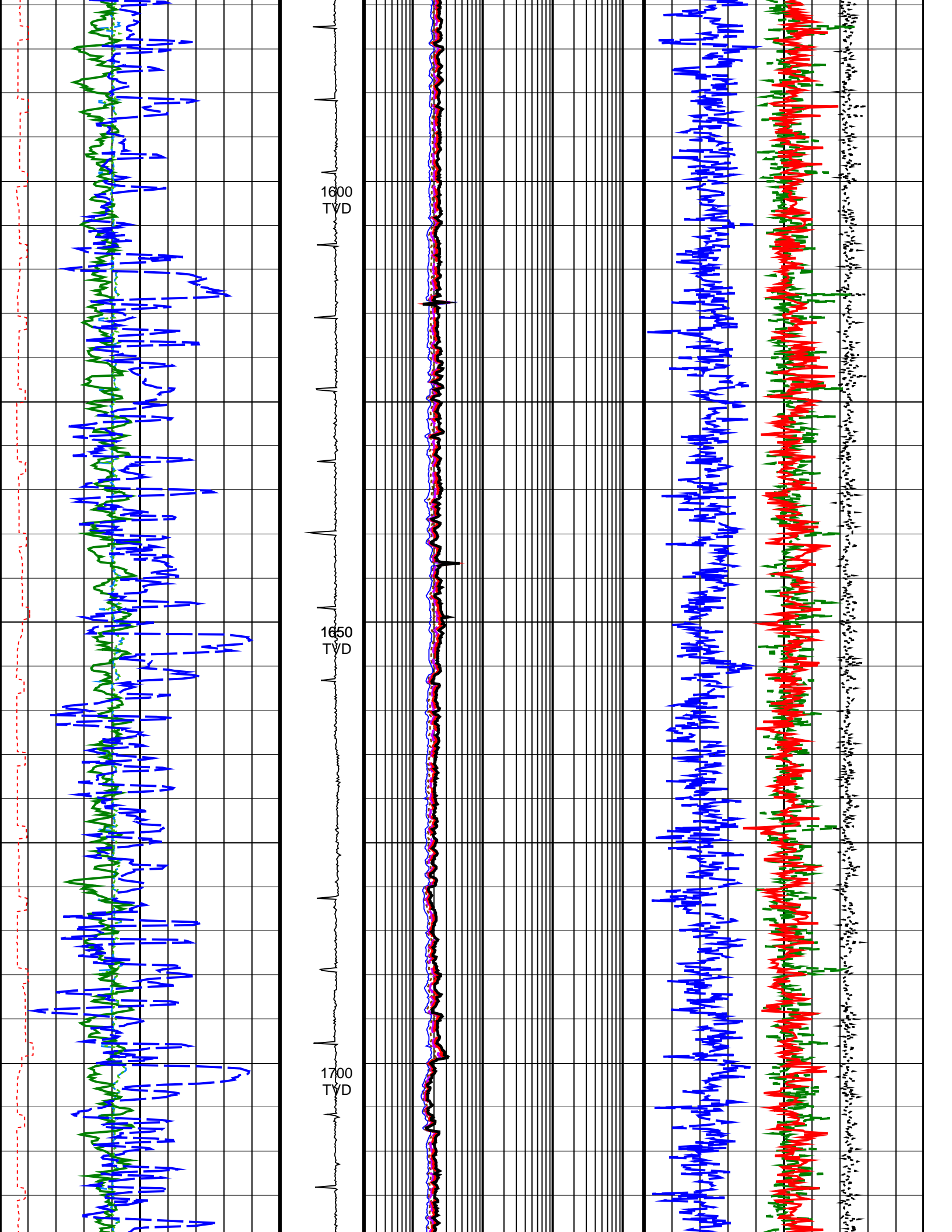


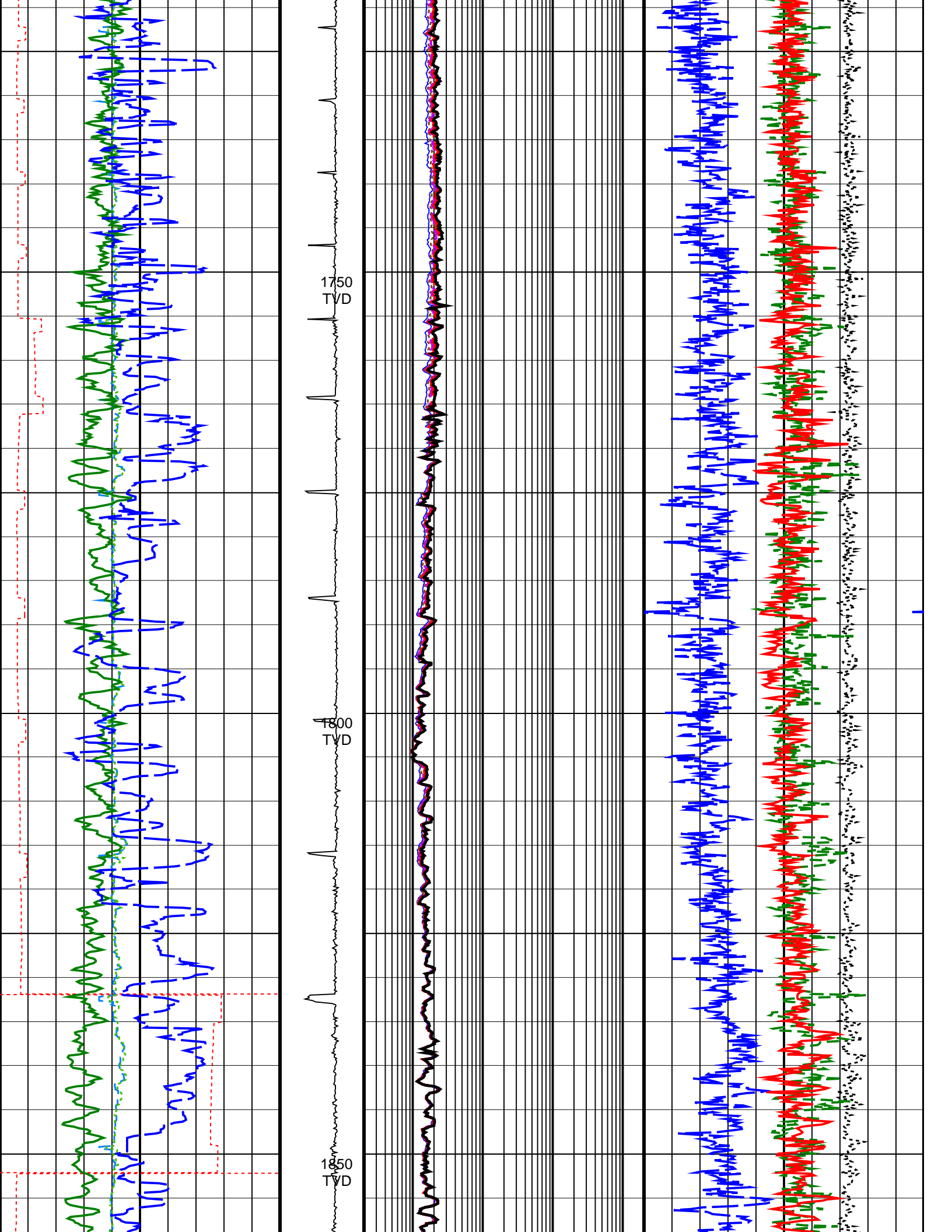




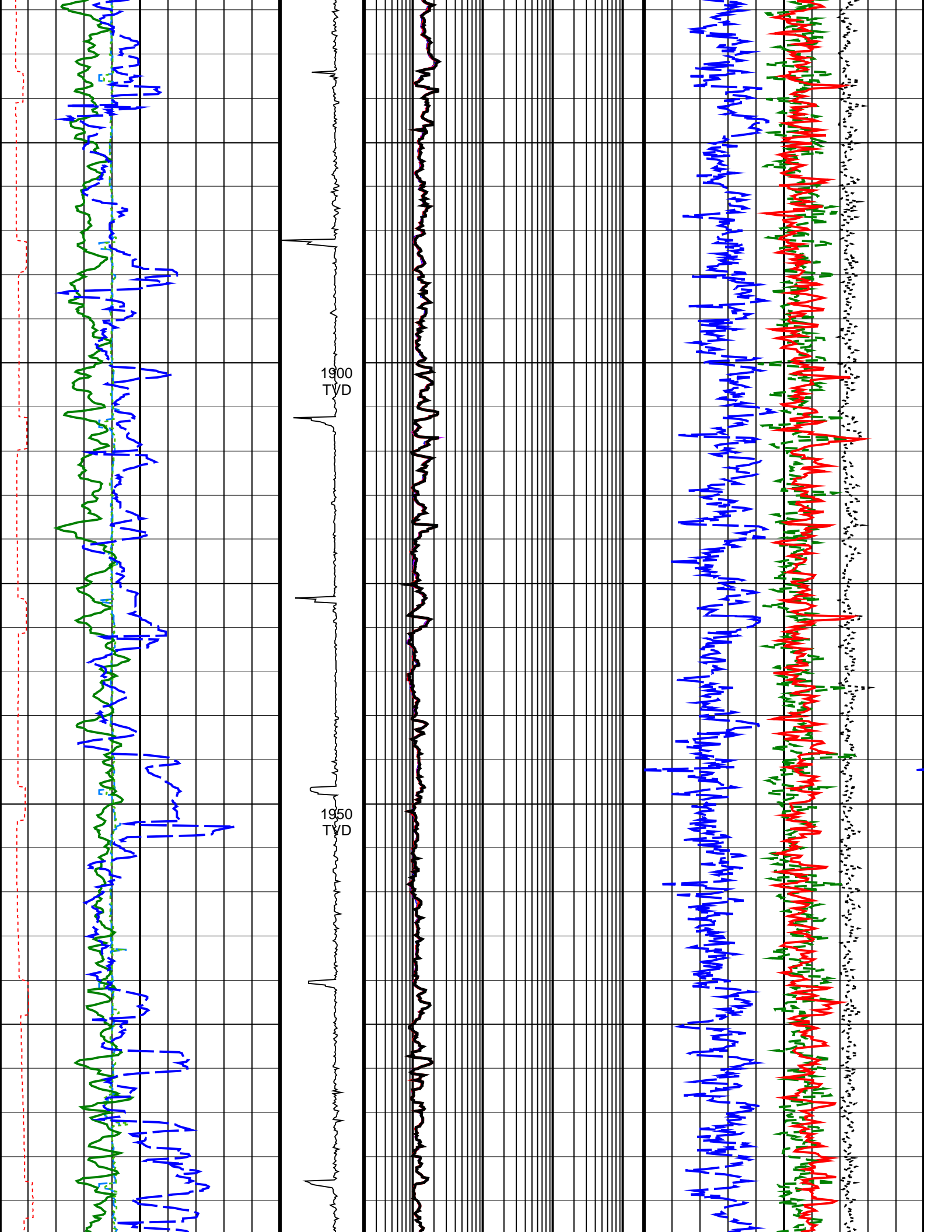


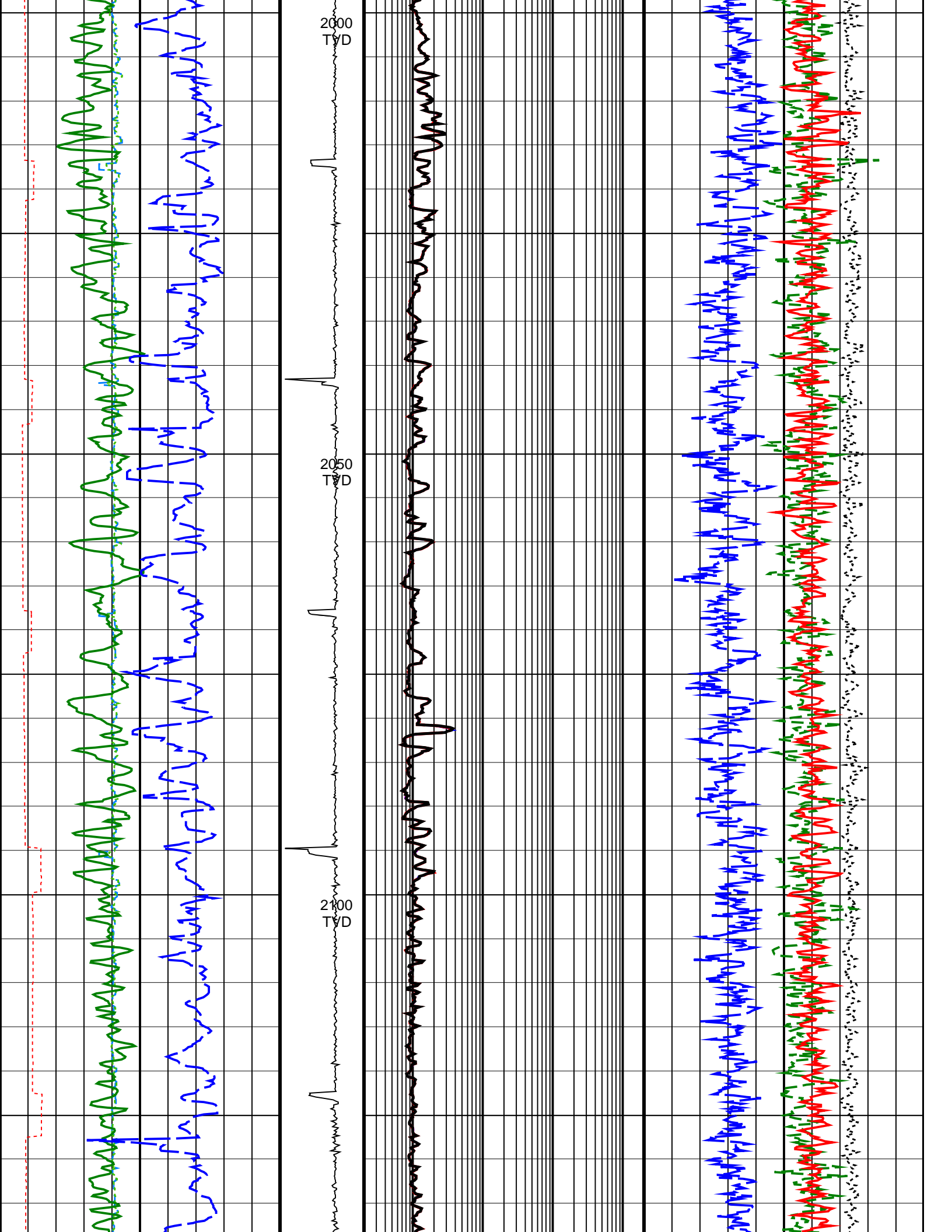


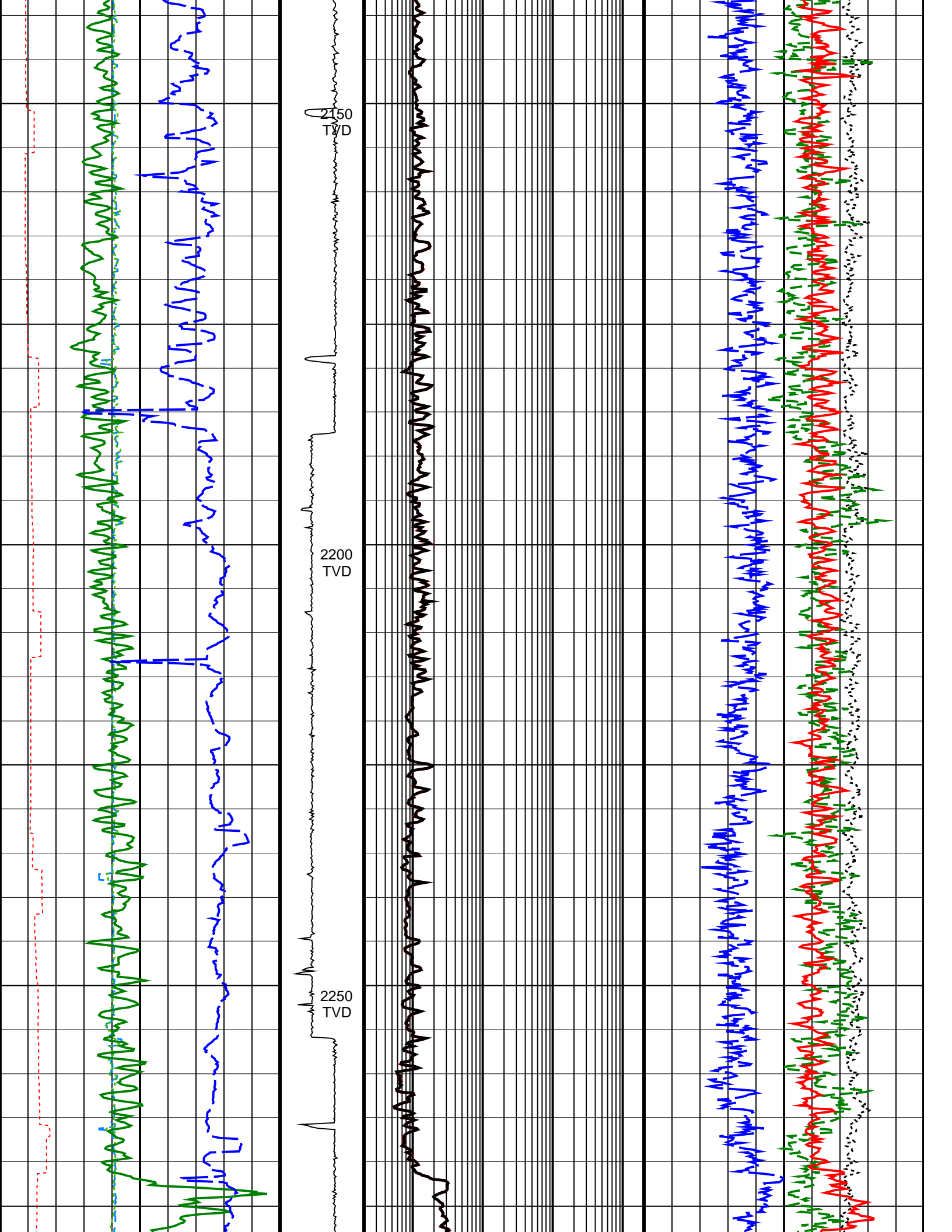


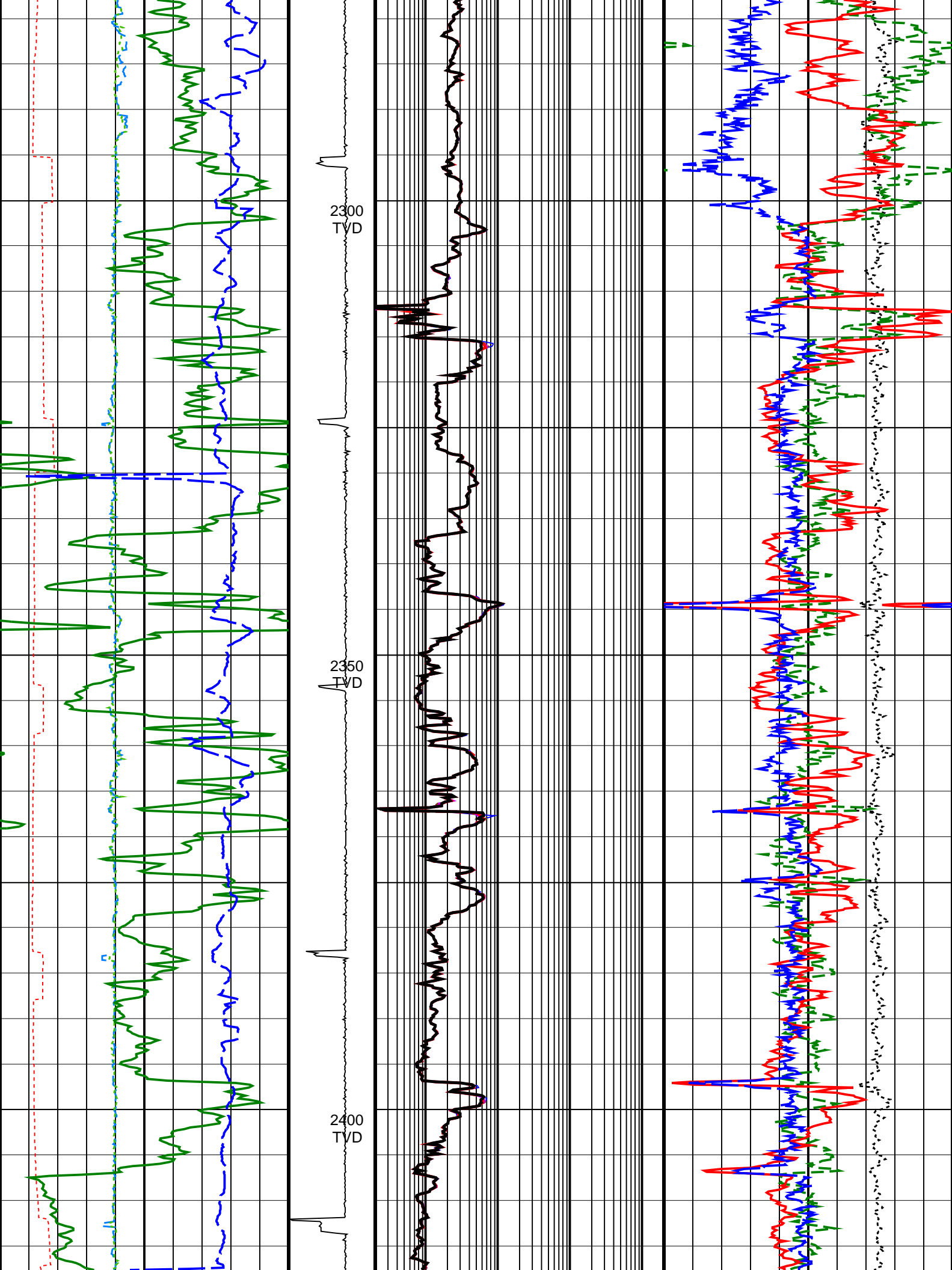


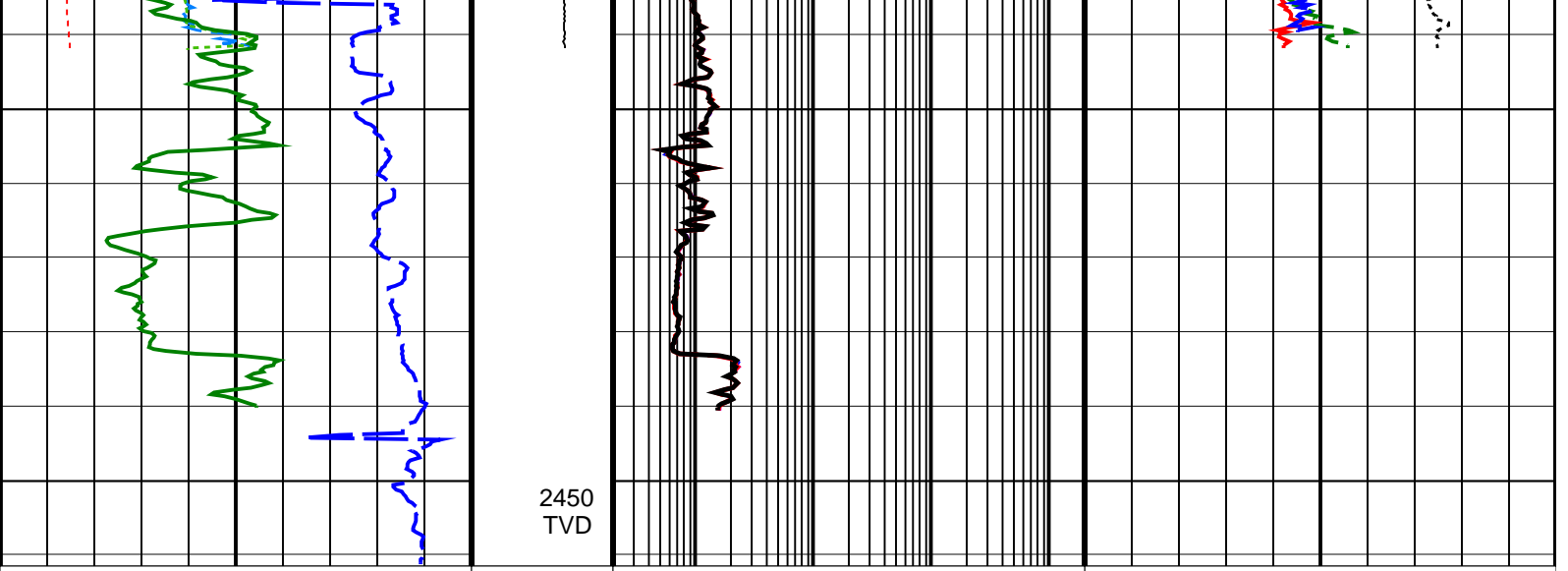












<b>Density Time After Bit (TAB_DEN)</b> (HR)	0 10	ADN Rotational Speed (RPM_ADN) (RPM) 0 250	<b>ARC Phase-Shift Resistivity 16-in. at 2</b> MHz (P16H)	<b>Bulk Density Correction, Bottom</b> (DRHB)
			0.2 (OHMM) 2000	-0.75 (G/C3) 0.25
<b>Horizontal Hole Diameter (HORD)</b> (IN)	6 16		<b>ARC Phase-Shift Resistivity 22-in. at 2</b> MHz (P22H)	<b>Photoelectric Factor, Bottom (PEB)</b> (----)
			0.2 (OHMM) 2000	0 10
<b>Vertical Hole Diameter (VERD)</b> (IN)	6 16		<b>ARC Phase-Shift Resistivity 28-in. at 2</b> MHz (P28H)	<b>Bulk Density, Bottom (ROBB)</b> (G/C3)
		0.2 (OHMM) 2000	1.85 2.85	
<b>ARC Gamma Ray (GR_ARC)</b> (GAPI)	0 200	<b>ARC Phase-Shift Resistivity 34-in. at 2</b> MHz (P34H)	<b>Thermal Neutron Porosity (TNPH)</b> (V/V)	
		0.2 (OHMM) 2000	0.45 -0.15	
<b>Rate of Penetration, Averaged over Last</b> 5ft (ROP5_RM)	200 0	<b>ARC Phase-Shift Resistivity 40-in. at 2</b> MHz (P40H)		
		0.2 (OHMM) 2000		

IDEAL Version: ID14\_0C\_26  
IDF

ARC6A-AA      Id14\_0c\_26      MWD\_10      Id14\_0c\_26  
SON675      Id14\_0c\_26      ADN      Id14\_0c\_26

True Vertical Depth Log